



the Queen's Fund

2018/19

Annual Report

EMPOWERING VICTORIAN WOMEN

QUEENSFUND.ORG.AU

*Investing in Victorian
women and children
since 1887.*



ACKNOWLEDGEMENT OF COUNTRY

The Queen's Fund respectfully acknowledges all traditional custodians of the land and waterways in Victoria and we pay our respects to Elders past, present and emerging.

QUEENSFUND.ORG.AU

the Queen's Fund

IN THE PAST YEAR, THE QUEEN'S FUND HAS PROVIDED ASSISTANCE
TO 1,548 WOMEN ACROSS VICTORIA.

IT IS PARTICULARLY REWARDING WHEN WE HEAR BACK FROM SOME
OF THESE WOMEN AND AND THEY TELL US ABOUT HOW THE IMPACT
OF THIS SUPPORT HAD IMPROVED THEIR LIVES.

*" My daughter is
able to walk through
those school gates with
her head high . "*

"Thanks to The Queen's Fund, I was able to pay my daughter's school fees. Thank you so much for the assistance - it has taken a big burden off my shoulders and brought much relief. I hope you understand just how much difference \$300 can make to someone, especially through hard times like I'm having. It's one less thing now I have to stress about, instead of panic about this I can breathe."



*" It helped my client
receive a much needed
new appliance . "*

*" Once again,
The Queen's Fund has
prevented someone from
becoming homeless . "*

A 49-year-old aged care worker recently had her working hours reduced from 72 hours/week to 40 hours/week, following a change in manager. This significantly impacted her income and she fell into rental arrears and was facing eviction and homelessness. The Queen's Fund made a lump sum payment towards her rental arrears, while Uniting Wyndham worked with her to help her find more work and ensure her rental payments in the future.

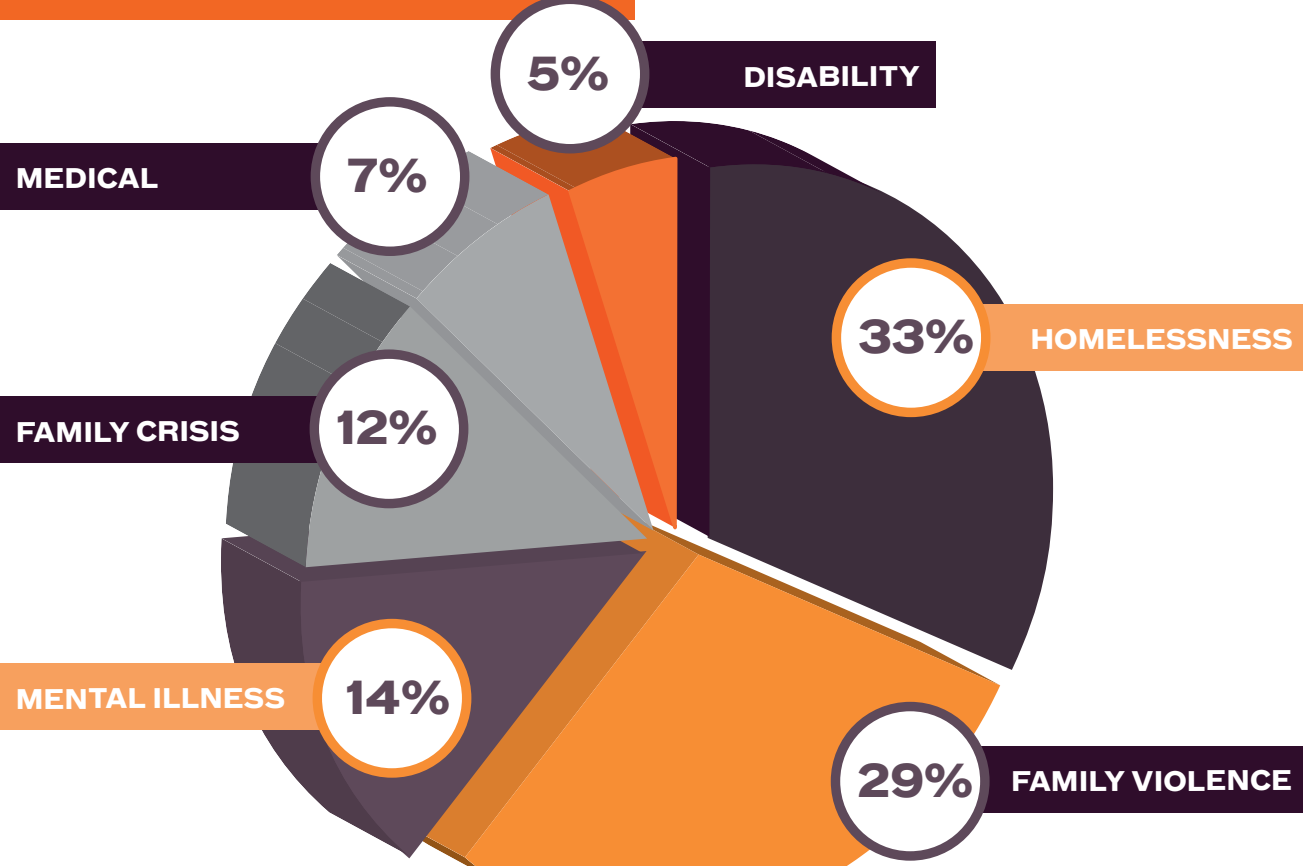


A 33-year-old single mother of two young daughters had escaped ongoing family violence and her ex-partner, the father of her children, had been incarcerated. She was living in crisis accommodation and her secondhand washing machine broke, flooding her apartment. She was using her neighbour's laundry, but a longer-term solution was needed. The Queen's Fund contributed \$350 towards the cost of a new washing machine, relieving a significant amount of stress for the client.



2018/19 Year In Review

WHY WOMEN NEED OUR HELP



TOTAL FUNDS PROVIDED

\$542,020

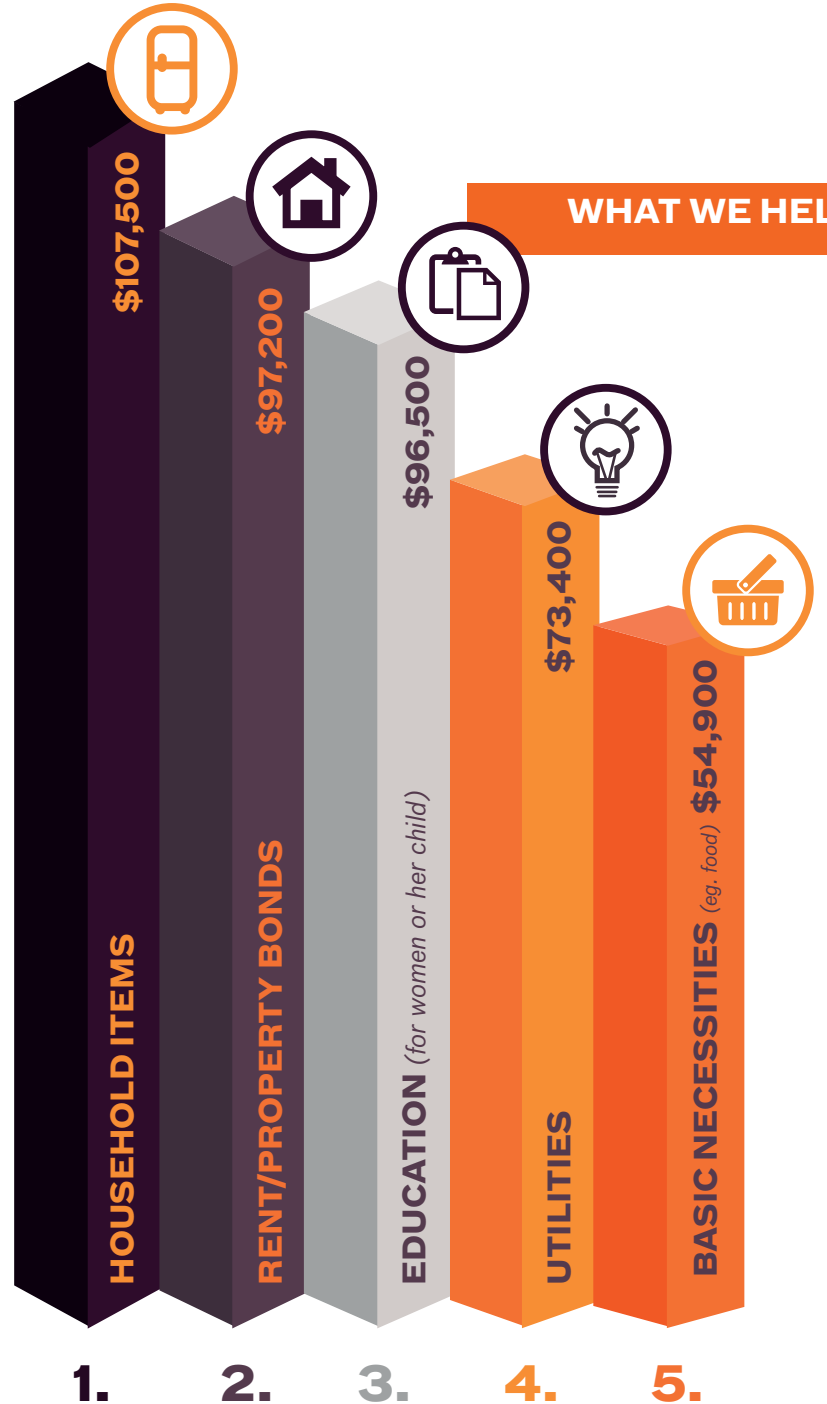
EACH MONTH WE REVIEW ON AVERAGE 145 APPLICATIONS

This year 83 applications were fast tracked

OUR EDUCATION FUND ASSISTED OVER 100 WOMEN TO UPSKILL THEMSELVES, AND A FURTHER 200 WOMEN TO SUPPORT THEIR CHILDREN'S EDUCATION

- | | |
|--|--|
| 180 ORGANISATIONS ACROSS VICTORIA REFERRED WOMEN | 7% OF THE WOMEN WE SUPPORT ARE ABORIGINAL & TORRES STRAIT ISLANDER |
| 168 GENEROUS INDIVIDUAL DONORS | 89 OF THE WOMEN WE ASSISTED WERE REFUGEES |
| 34 GENEROUS TRUSTS AND FOUNDATIONS | |

WHAT WE HELP WITH



NUMBER OF WOMEN AND CHILDREN ASSISTED:

1,548 2,065

ALMOST TWO-THIRDS OF THE WOMEN WE HELP ARE MOTHERS.

About Us

OUR VISION

To financially assist and empower single women and children in Victoria who are in distress, crisis or emergency situations.

OUR MISSION

The Queen's Fund provides financial aid to single women and children in Victoria who are subject to hardship. Grants are allocated to women who are referred by community organisations and welfare agencies.

The Queen's Fund encourages women to increase their self-worth, skills and knowledge through the:

- provision of short-term emergency relief to alleviate immediate financial crises with rent, medical and household expenses;
- allocation of educational grants to increase access to educational opportunities; and
- provision of grants which give women a chance to rebuild their lives and nurture their children.

ABOUT US

The Queen's Fund provides emergency funding to Victorian women and children in crisis.

The assistance we provide can help prevent homelessness, enable a woman to escape family violence, provide education or training for a woman and/or her children, pay essential medical bills or provide crucial breathing space so a woman can get her life back on track.

We work with social workers who are in the best position to determine how to help the woman in need. They continue to support her after our emergency relief has been provided.

Founded in 1887, we are one of Victoria's oldest charities. Our committee is unpaid and we have very low overheads. A historical bequest from a committee member covers our overheads. This means 100% of the money you donate goes to the women and children who need it most.

"Thank you so much for your continued commitment to assisting those most vulnerable in our communities. Without your assistance so many more individuals would be left with very little options of support."

-August 2018.

**REFERRING AGENCY:
WINTRINGHAM SPECIALIST AGED CARE**

President's Report



I am delighted to share with you this year's annual report. All too often, we move forward without pausing to reflect upon our achievements. When I think back over the last 12 months, I am incredibly proud of what our organisation has achieved, considering our small size and despite being 100% run by volunteers.

This year we continued to respond to an increasing number of requests for assistance from women and their families in dire need. We supported 180 social service agencies and close to 1,550 women - a 35% increase on the previous year. Responding to this sustained growth in the demand for our services has presented us with opportunities to scale and evolve.

One example of this is the corporate partnership we entered in late 2018 with tier-one energy retailers EnergyAustralia, AGL and Origin to provide debt waivers on electricity and gas bills. EnergyAustralia has also been generously providing women with essential household appliances. This year we were also fortunate to be selected by professional services firm Deloitte to receive support as part of their Annual IMPACT Day. More detail on our inspiring corporate partners can be found on page 14.

We have also been challenged to grow our funding to meet the increased demand. As you will see on page 26, our efforts to lift our profile and diversify our funding base are paying off, with a significant expansion in the number of individual donors this year, as well as the introduction of workplace and monthly giving. Through your generosity, donations have for the first time surpassed \$500,000.

Another highlight this year has been the opportunity to meet with some of our referring agencies, who regularly confirm to us the incredible value of the work we do. One such example comes from John Templeman at Aboriginal Housing Victoria:

"We are often asked whether \$100 can make a difference. It can and it does. For \$100 we can put together one of our "Welcome Packs" that comprise the essentials for someone moving into one of our homes. We want new tenants, particularly those with few possessions who may have been homeless or escaping family violence, to focus their first step on providing food for themselves and their family. So \$100 makes a big difference and we are grateful for the support The Queen's Fund provides to our tenants."

One of The Queen's Fund's greatest strengths is our dedicated volunteers. As we close out the year, we are sad to be farewelling Judith Lawler who joined The Queen's Fund in 1995 and has served in many key roles, including three years as President. We also say à bientôt to Sophie Benardeau-Short who, after eight years on the committee, is taking a leave of absence to return home to France. Judith and Sophie have made an incredible contribution and will be greatly missed.

Finally, thank you again to our donors and partners for your ongoing support. Without your compassion and generosity, we would simply not be able to provide the level of assistance that we do.

Katie Bayley
President

Growth in Need

EMERGENCY RELIEF FUNDING

\$405,407
2017/18

TO

\$542,020
2018/19

+34%

\$67,609
2017/18



\$96,500
2018/19

**FUNDING FOR EDUCATION PURPOSES
INCREASED BY 43%.**

WOMEN AND CHILDREN ASSISTED 2017/18 - 2018/19

FROM 1,145 TO 1,548
+35%

FROM 1,447 TO 2,065
+43%

AVERAGE GRANT 2017/18

\$323

AVERAGE GRANT 2018/19

\$350

The Need for The Queen's Fund

The Queen's Fund supports single women and children in Victoria who are in distress, crisis or emergency situations.

Single women, particularly those with children, remain one of the groups in our society who are most in need of your support.

Women continue to be more likely to live below the poverty line. This outcome is due to women tending to have lower employment rates and lower wages than men, paired with a greater caring role for both children and family members

Recent statistics indicate that:

- a higher share of people in poverty are women (52%) ¹;
- there are 110,000 single-parent, low-income households living in rental stress and 82% of those households are single mothers ²;
- single mothers are paying up to 70% of their income on rent ³;
- women make up 64% of Victorians seeking help from homelessness services ⁴; and
- between 2012 and 2017 the number of older women couch-surfing increased by 83% and there was a 75% increase in older women sleeping in their cars and presenting at homelessness services ⁵.

"A single mother of two boys aged 11 and 13 experienced horrific physical, sexual, psychological and economic abuse for many years. She finally escaped to a refuge and had an intervention order taken out against her violent ex-partner. She was staying in motels, paid for by housing services, sleeping in the car with her boys and couch-surfing. It was very important to her that her children had one stable thing in their life, their schooling. The Queen's Fund granted the requested amount of \$350 to help pay for the education arrears at her son's school, thereby ensuring his enrolment in Year 8."

- December 2018.

Referring Agency: Uniting Kildonan

"Funding from the Queen's Fund has the power to create real change for women in managing the pressures of single parenting and financial hardship."

- March 2019.

REFERRING AGENCY: BANYULE COMMUNITY HEALTH

¹ Poverty in Australia, 2018, ACOSS/UNSW ⁴ The Specialist Homelessness Services 2017-18 Web Report, Australian Institute of Health and Welfare, 13 February 2019
² Rental Affordability Index, November 2018
³ Rental Affordability Index, November 2018 ⁵ Vital Conversations, LMCF, March 2019

The Journey, What we Do



1.

THE NEED

Single Victorian woman is in crisis, distress or an emergency situation.



2.

APPLICATION

Woman meets with social worker (or similarly qualified professional). Social worker applies to The Queen's Fund on behalf of the woman for assistance via online portal. Assistance provided is in the form of:

- Monetary grants for rent, utilities, household items, basic necessities, medical assistance, education for self or child, transport, storage and moving costs.
- Telstra bill assistance vouchers.
- Utility debt waivers & appliance grants.



3.

ASSESSMENT

Applications are considered through 2 channels:

- Fast track to secure housing or if there is a threat of eviction/disconnection.
- Referral meeting – 3rd Monday of every month.



4.

APPROVAL

Upon approval, grants are sent directly to the nominated third party payee or Referrer via BPAY, EFT, cheques or vouchers. A letter of confirmation is sent to the Referrer.



5.

RECEIPT OF GRANT

The Referrer meets with the woman to provide confirmation of funding and (if applicable) cheque.



6.

ACQUITTAL REPORT

Referrer provides The Queen's Fund with an Acquittal Report signed by Referrer and woman to acknowledge assistance provided.

"I hope you guys understand just how much difference \$300 can make."

- January 2019.
REFERRING AGENCY: SALVATION ARMY.
CLIENT FEEDBACK.

Some of the Referring Agencies We Work With



In Conversation With...

This year we received applications from over 600 different social workers across 180 community organisations. We are incredibly grateful for the work they do at the coalface, supporting vulnerable women in crisis.

One of our regular partners, **KATIE O'BRIEN**, who is the Emergency Relief Coordinator at Whittlesea Community Connections spoke to us about her experience with The Queen's Fund.

What does your role involve?

I'm a social worker who works with the community living in the City of Whittlesea and through my role I provide community information, support and referral. We provide case work support and advocacy around family violence, homelessness, financial hardship and personal crisis. We provide support through ongoing casework, material aid and referrals to appropriate services.

How did you find out about The Queen's Fund?

The organisation I'm employed by has been applying for financial assistance for single women, facing financial hardship, through The Queen's Fund for many years. I completed my first application 2 years ago.

How has being able to access The Queen's Fund affected your professional life?

Being able to access The Queen's Fund alleviates some of the stress around finances and allows me to provide support, information and advocacy to address other issues.

What has been the biggest highlight of your partnership with The Queen's Fund?

The biggest highlight was working with a single mother of two children. I had placed an application for storage costs as she was currently homeless and unemployed. When I called to notify her of the cheque, the client was genuinely surprised and had been able to find housing. The money allowed the woman to pay her storage costs and move her belongings into the new property. From there she was able to actively search for employment.

Is there anything different about how The Queen's Fund supports your clients?

The Queen's Fund application process is non judgemental and inclusive. It doesn't matter if you're a single woman who is a citizen, refugee or asylum seeker, The Queen's Fund believes in supporting all women. Having a third party (social worker) applying for the grant further alleviates further stress on the woman. The funding acknowledges the client's situation and provides the client with hope and support.

Why do you care about supporting women in financial difficulty? What is your personal connection?

Supporting women and children to overcome financial difficulties, that are more often than not the result of family violence, is important to see the change to the families' life as result of funding and casework support. It is very important to me, to empower women by providing resources and knowledge.

Referring Agencies

We received applications from over 180 agencies from across Victoria.
Our top 10 agencies accounted for over 40% of our referrals.

THE 10 AGENCIES THAT MADE THE MOST APPLICATIONS TO THE QUEEN'S FUND IN 2018/19 WERE:

- Launch Housing
- UnitingCare Australia
- WAYSS Ltd
- Whittlesea Community Connections
- Quantum Support Services Inc
- The Salvation Army
- Bethany Community Support Inc
- Sacred Heart Mission
- Star Health Mental Health Integrated Complex Care
- EACH

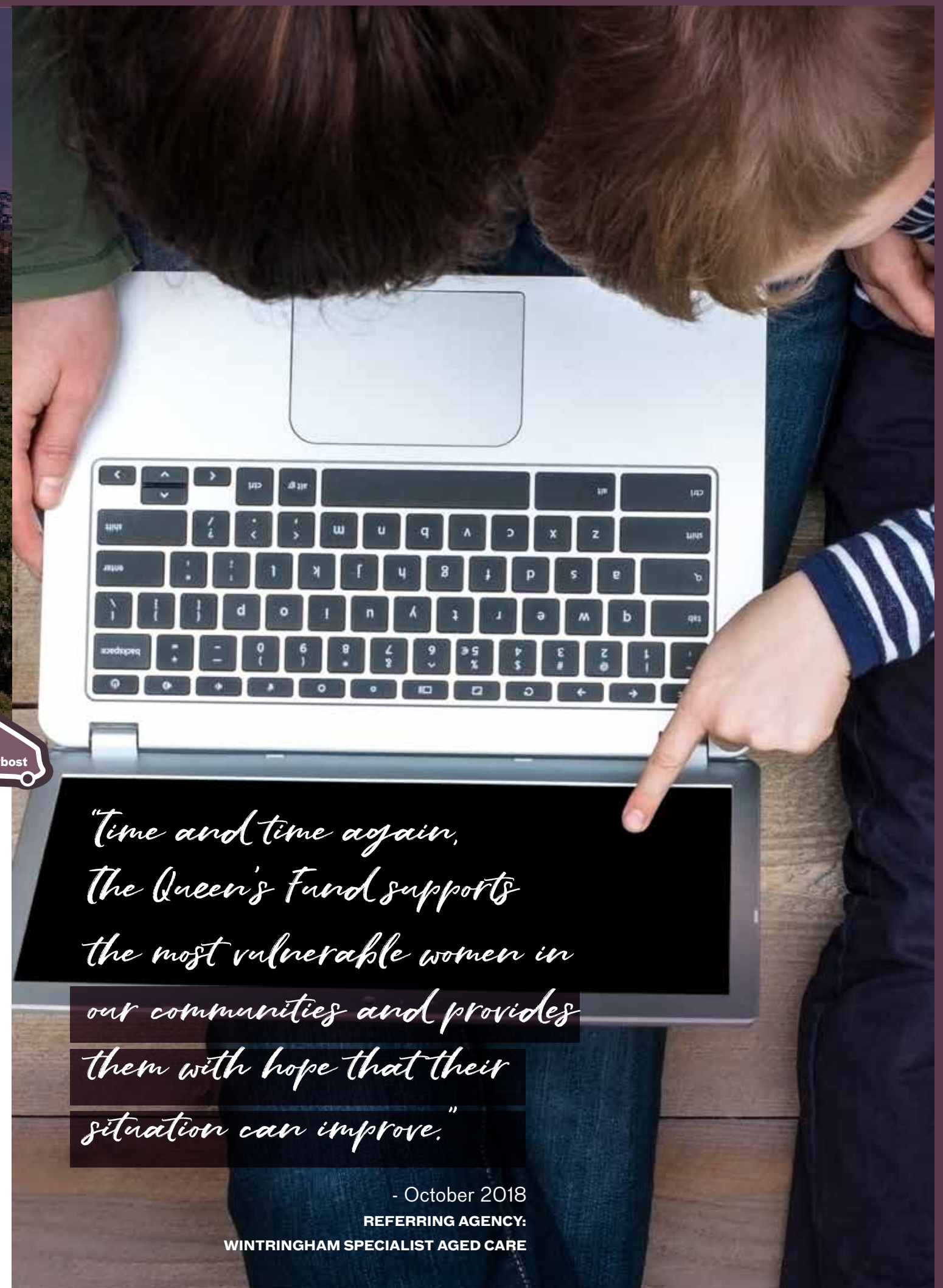


The Queen's Fund received applications for assistance for women and children during the 2018-2019 financial year from the Melbourne Metropolitan area as well as regional Victoria. These areas include but are not limited to Alexandra, Bairnsdale, Ballarat, Beechworth, Bendigo, Castlemaine, Cobaw, Colac, Echuca, Healesville, Horsham, Geelong, Kerang, Mallee, Maryborough, Mildura, Mornington, Morwell, Orbost, Portarlington, Portland, Rosebud, Sale, Shepparton, St Arnaud, Swan Hill, Torquay, Traralgon, Wangaratta,

"The Queen's Fund is a lifesaver for many of our clients who are in desperate circumstances. Agencies such as ours and The Queen's Fund working together can make such a difference in women's lives."

- March 2019.

REFERRING AGENCY: HICCI



*"Time and time again,
The Queen's Fund supports
the most vulnerable women in
our communities and provides
them with hope that their
situation can improve."*

- October 2018

REFERRING AGENCY:

WINTRINGHAM SPECIALIST AGED CARE

The Power of Partnerships

ENERGY PARTNERSHIP LIGHTS THE WAY

In 2018/2019, The Queen's Fund formed a powerful partnership with some of Australia's largest energy retailers. Australia's leading energy retailers joined with The Queen's Fund to assist us to reduce the stress and burden on women who are struggling to make ends meet.

Over 40 eligible women who are EnergyAustralia, AGL or Orgin Energy account holders have been able to apply to receive assistance with their energy bills this financial year. In addition, EnergyAustralia is supporting The Queen's Fund to offer new household appliances (including delivery) to eligible applicants. So far, more than 30 women have taken up this generous offer.

These companies are helping us to empower (pun intended) Victorian women and families. The Queen's Fund is incredibly grateful for their support.

A young mother with two older children and newborn twins requested assistance from The Queen's Fund. She has previously been homeless and is single due to family violence. She experienced a high risk pregnancy and she was unable to work, causing financial strain. She has limited family support and birth of the twins has impacted her mental health. She has subsequently fallen behind on her bills. The debt waiver program will assist her in giving her some much needed breathing space to get back on her feet.

- April 2019
REFERRING AGENCY - HICCI

B2C PROVIDES PATHWAYS TO EDUCATION

B2C Community IT Recyclers (B2C) continues to show its support for The Queen's Fund through its 15% discount on refurbished desktop computers or laptops to applicants. 44 eligible women have received assistance in 2018/2019. B2C Community IT Recyclers is a social enterprise of The WERX Foundation Inc, a not-for-profit organisation, and is committed to assisting local and overseas communities in need by providing low-cost refurbished IT equipment. They also provide re-training to those disadvantaged in the labour market, and attempt to do so while reducing the amount of IT waste through environmentally responsible recycling procedures. The Queen's Fund would like to thank B2C for their generous support. Our organisations look forward to seeing improved financial circumstances, pathways to education and emotional wellbeing for Victorian single women in need through increased access to affordable computers.



DANNY GIL

Executive Director, The Werx Foundation.

How did you find out about The Queen's Fund?

We were approached by past President Sally McLean.

Why do you partner with The Queen's Fund?

It is a pleasure to support The Queen's Fund. Being able to provide a refurbished computer to a woman or child in need is great. As a social enterprise ourselves (we recycle IT equipment and provide work experience

and training for people with disabilities) we are very much in alignment with what The Queen's Fund stands for.

Why do you care about supporting women in financial difficulty? What is your personal connection?

This goes back a long way for me as I started my career as a youth worker.

Ambler Bequest

In July 2014, The Queen's Fund was the recipient of a generous bequest from the estate of the late Oliver Ambler. Mr Ambler had died many years ago but the residue of the estate could only be dealt with after the passing of the last of his nieces and nephews. One family member had been receiving annual income payments for some 60 years!

The significant bequest, provided The Queen's Fund with \$250,000 to assist women in financial distress. In line with the estate's guidelines, funding has been directed towards (and confined to) clients who have an affiliation to the Uniting Church, through being represented by one of the various Uniting Church social worker agencies.

To date, the bequest has enabled The Queen's Fund to assist 375 women and their children, with over to \$220,000 of funding. The key needs this bequest has supported include:

- provision of basic household goods (e.g. beds, fridges, washing machines)
- support for education (for women or their children including course fees, books); and
- securing housing and preventing homelessness (bond and rental payments)

"I'm happy to report the [VCAT] hearing was successful (and would not have been without the grant.)"

The Ambler bequest supported a single mother with a 5-year-old son. They were facing imminent eviction and a strong risk of homelessness. With limited support in Australia, her mother's death had caused emotional distress and placed her under significant financial pressure. Although unable to attend the funeral, she was obliged to contribute to it. Having previously successfully repaid a debt to her landlord via a payment plan, the failure to pay a single payment provided the real estate agent on this occasion with the power to evict her without the usual waiting period. She was given just one business day's notice and had no one else she could stay with. Under extreme time pressure, Uniting sought a restraining order with VCAT and contacted The Queen's Fund for assistance. Using the Ambler Bequest, we were able to provide a larger than usual grant to pay the rental arrears, enabling this mother and her son to avoid eviction.

- January 2019
REFERRING AGENCY - UNITING LENTARA

A 21-year-old mother and her young son had been made homeless due to sexual violence in their home. They experienced two months of sleeping rough and substandard crisis accommodation. Additionally, the four-year-old boy is deaf and experiences developmental delays. His mother could not communicate with him, making his behaviour difficult to manage.

The young family were provided with accommodation, but had no possessions. Money from the Ambler Bequest was used to buy furniture for their new home, and to support the mother to undertake an Auslan language course so she could communicate with her son.

- March 2019
REFERRING AGENCY - UNITING WERRIBEE

Our Impact:

PREVENTION OF HOMELESSNESS & ENABLING ESCAPE FROM DOMESTIC VIOLENCE

HOW THE QUEEN'S FUND HELPS

- Pay bond to secure housing.
- Pay a lump sum towards rental arrears to maintain tenancy.
- Pay for storage of possessions when a woman becomes homeless.
- Pay removal costs to enable a woman to escape family violence or access housing.
- Pay for essential household items when a woman finds a new home.

"[The Queen's Fund] assisted [my client] to remain in the property."

August 2018.

REFERRING AGENCY: QUANTUM SUPPORT SERVICES

WHAT YOUR MONEY PAYS FOR

\$200

**PAYS FOR A BOND DEBT SO A
WOMAN AND HER CHILDREN CAN
SECURE OFFICE OF HOUSING
ACCOMMODATION**

CASE STUDY

"It will prevent the family from becoming homeless."

A single mother of 2 boys fled a family violence situation, moved into a refuge, transitional housing and then public housing. She was successfully maintaining her housing, until the child support payments she was receiving started becoming inconsistent. At the time this happened, she was completing a 12 month traineeship and was on a low income. After completing her course she was offered another traineeship but there was a three month gap before she commenced her new job. She had no income during this time and fell into rent arrears. The Queen's Fund contributed \$350 towards her rent arrears, enabling a payment plan to be put into place and preventing eviction.

-January 2019.

REFERRING AGENCY:

SUNBURY COMMUNITY HEALTH

Our Impact:

ACCESS TO EDUCATION & TRAINING PATHWAYS

THE EDUCATION FUND

The Queen's Fund places great emphasis on the importance of education to alleviate long-term, systemic poverty. In 1998, The Queen's Fund set up a separate fund called The Education Fund. The Education Fund aims to assist children to remain in education and allow women to further their education so they can find long-term employment and become financially secure.

For the period 1 May 2018 to 30 April 2019, The Queen's Fund spent \$96,500 assisting 102 women and 202 children in the pursuit of education and training pathways.

HOW THE QUEEN'S FUND HELPS

- Contribute to the cost of further education or a training course.
- Pay for English classes.
- Pay for Working with Children Checks and Police Checks.
- Pay for school fees, school uniforms and textbooks for children.
- Contribute to the cost of a laptop or iPad where required for school.
- Pay for a child to attend school camp.
- Pay for extra curricular activities for a child.

WHAT YOUR MONEY PAYS FOR

\$233.75

**PAYS FOR A REFURBISHED COMPUTER
OR LAPTOP FROM B2C COMPUTERS SO
A WOMAN OR HER CHILDREN CAN STUDY**

CASE STUDY

"Without this support she would not have been able to continue studying."

A 20 year-old female Ethiopian migrant reached out to The Queen's Fund to help further her education. Having come to Australia on an orphan relative visa when she was 14, she was committed to learning English and completing high school. During school she and her sister's housing became unstable and they were forced to move out of their uncle's house. After a period of homelessness, they received public housing. After completing Year 12 successfully, she was accepted into the Diploma of Nursing course at RMIT in 2019. She needed funding to purchase textbooks, stationery, upfront fees and myki travel costs. The Queen's Fund grant helped pay her education expenses. She is still studying the Diploma of Nursing and has completed her first placement.

- December 2018

REFERRING AGENCY:

MICARE-NEW HOPE FOUNDATION

Our Impact:

ACCESS TO HEALTHCARE & IMPROVED HEALTH

HOW THE QUEEN'S FUND HELPS

- Pay essential medical bills.
- Pay the cost of essential medical items.
- Pay the cost of car registration or car repairs so a woman or her child can get to medical appointments.
- Pay bills that mount up during extended periods of illness.

"Your ongoing commitment to helping vulnerable women is highly valued by our program and assists our clients in improving their recovery."

- July 2018.

REFERRING AGENCY: STAR HEALTH

WHAT YOUR MONEY PAYS FOR

\$150

PAYS FOR PRESCRIPTION
GLASSES OR LIFE-SAVING
MEDICATION

CASE STUDY

"The walking frame gave her confidence to leave the house and gave her back her independence."

The client lived with schizophrenia, anxiety, depression and arthritis in her ankle and foot causing pain with mobility. She experienced frequent falls which resulted in a fear of falling, fear of leaving her house, increased social withdrawal and reduced confidence. She requested funding for a walking frame which would enable safe and independent mobility, improve mental health and give her the ability to participate in community activities. The Queen's Fund granted the requested amount of \$345.

-January 2019.

REFERRING AGENCY: DPV HEALTH

Our Impact:

ENABLING A WOMAN IN CRISIS TO GET BACK ON TRACK

HOW THE QUEEN'S FUND HELPS

- Pay essential utility bills to prevent disconnection.
- Pay to repair or replace vital household items.
- Reduce a debt to give a woman in crisis breathing space.

"Thank you Queen's Fund! Your assistance is consistently assisting WAYSS clients to access essential items and alleviate financial hardship."

- January 2019

REFERRING AGENCY: WAYSS

WHAT YOUR MONEY PAYS FOR

\$350

CONTRIBUTES TO THE PURCHASE OR
REPAIR OF ESSENTIAL HOUSEHOLD
APPLIANCES

CASE STUDY

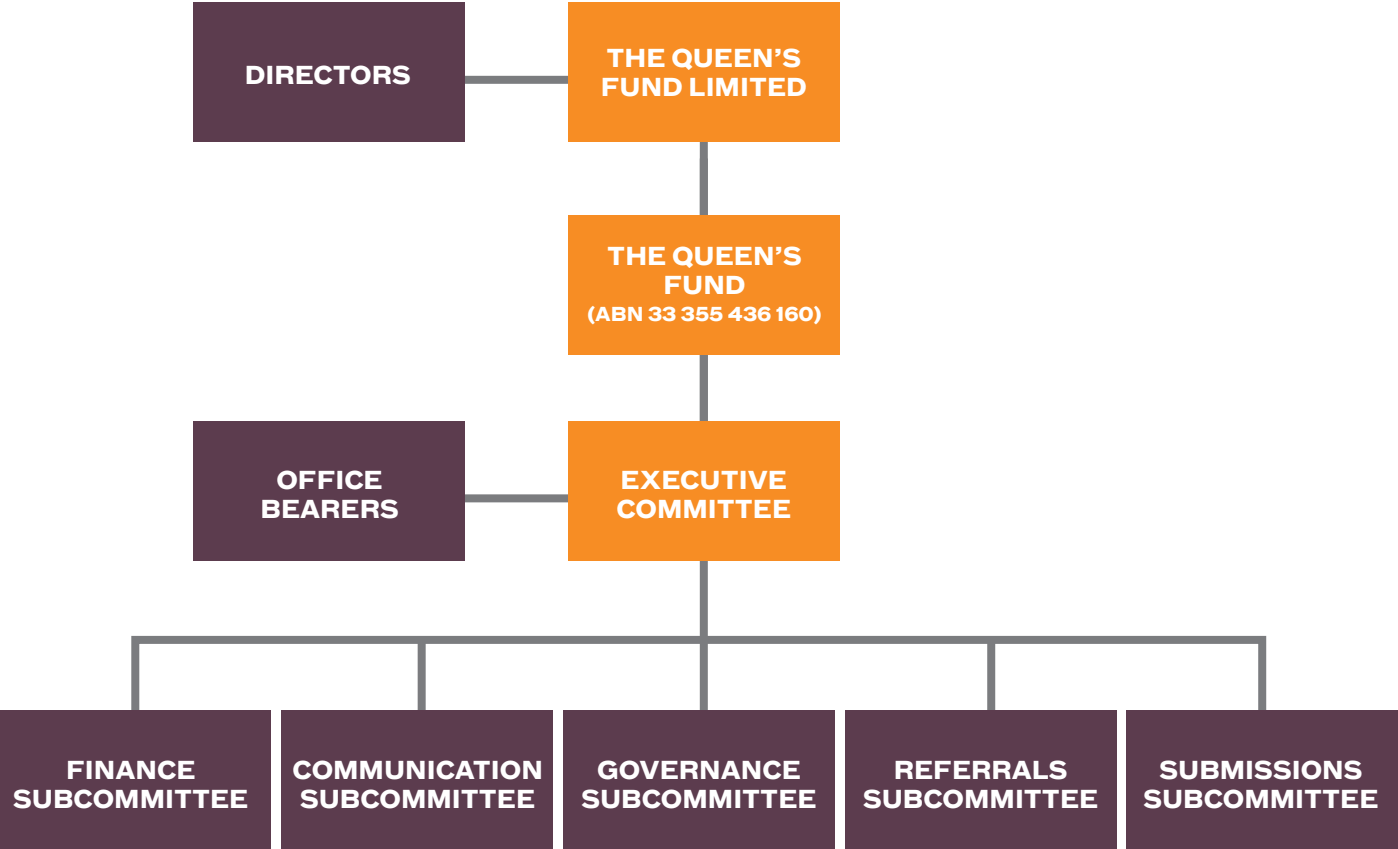
"She has no income, no savings, no ID"

A 42 year old single woman, had a diagnosis of schizophrenia, had not been taking her medication and became unwell. She was found living in a stairwell, brought to hospital and then discharged to a hotel, with 2 weeks paid by the hospital. She had no income, no savings, no ID and was socially isolated. She was being assisted with mental health and housing. The Queen's Fund granted her \$350 so she could order a new driver's licence, buy food and pay for public transport to Centrelink and mental health services.

- November 2018.

REFERRING AGENCY: HOMELESS OUTREACH
PSYCHIATRIC SERVICE - THE ALFRED

Our Structure



Our People

- PATRON**
The Governor of Victoria
The Honourable Linda Dessau AC
- TRUSTEE**
The Queen's Fund Limited (TQFL)
(ACN 622 589 600)
- DIRECTORS OF TQFL**
Katie Bayley
William Jones
Jane McLaughlin
Sally McLean
Gail Owen OAM
Belinda Thompson
- COMPANY SECRETARY OF TQFL**
Kathryn de Bont
- CHAIRS OF SUBCOMMITTEES**
Sophie Benardeau-Short (Communication)
Kathryn de Bont (Governance)
Lili Zhao (Referrals)
- OTHER MEMBERS**
Margaret Allen
Anne-Laure Cavigneaux
Lee Ann Connor
Beenu Fernando
Melisa Hudson
Andrea King
Judith Lawler
Sally McInnes
Jane McLaughlin
Erica Moloney
Penny Montgomery
Helen Moylan
Glenys Severin
Emily Tang
Lalitha Visuasam
Mandy Wong
Beatrice Zolla
- EXECUTIVE COMMITTEE OFFICE BEARERS**
Katie Bayley (President)
Sally McLean (Deputy President & Chair of Submissions Subcommittee)
Thelma Castles OAM (Secretary)
Frieda Yeo (Treasurer & Chair of Finance Subcommittee)

VOLUNTEER NUMBERS



* Projected hourly wage rates for volunteers, 2016. 'Key Facts and Statistics About Volunteering in Victoria', Volunteering Victoria Information Sheet, (January 2018)

In Conversation with...



FRIEDA YEO
Treasurer

Frieda joined The Queen’s Fund in 2017. Her accounting skills, dedicated work ethic and ability to get things done were quickly recognised by the committee and she became Treasurer in June 2018.

How did you find out about The Queen’s Fund?

Through a discussion with Sally McLean - our daughters go to school together.

Why do you volunteer for The Queen’s Fund?

I spent 20 years in corporate life, working very long hours. Between family and work commitments, I never had much time to contribute back to the community. Now that I’m not working full time, I have the capacity to choose how to spend some of my working day. I think that it’s important to try and make a difference in our society and give back as much as I am able.

What has been the biggest highlight of your work with The Queen’s Fund?

Working with like-minded women who are clearly very passionate about The Queen’s Fund and the work that we do.

How has volunteering affected your personal or professional life?

It has given me a different, and probably more balanced perspective of the community in which we live. I am able to use my accounting and financial reporting skills, as well as being a lot more organised in my daily life.

There are lots of charities doing important work. Is there anything different about The Queen’s Fund that inspired your support?

I think that all charities have their place - whether they’re international, national, local, doing research or raising funds for diseases. The Queen’s Fund is unique in that we are a Victorian based charity, that passes on 100% of our donations through to the women and children who need it most.

Why do you care about supporting women in financial difficulty? What is your personal connection?

For many of the women who we assist, the circumstances in which they find themselves is not of their own making and becomes a circular trap. My hope is that the work that we do can break that cycle, and make a positive difference in their lives.

Financial Summary

	NOTE	2019	2018
Donations - Capital Account	1	\$188,468	\$125,437
Donations - Revenue Account	2	\$361,225	\$251,215
Interest & Dividends		\$92,896	\$80,509
Total Income Available for Grants		\$454,121	\$331,724
Amount Granted	2	\$513,270	\$400,357
Other Expenses	3	\$5,343	\$4,285
Net Surplus		\$123,976	\$52,519

Note 1 - Donations to the Capital Account are unavailable for grants.
Note 2 - Does not include value obtained from non-cash partnerships.
Note 3 - All expenses in 2018 and 2019 are covered by Estate of Violet Tivey.

ACCUMULATED FUNDS

The Queen’s Fund and Trustees for The Queen’s Fund

	NOTE	2019	2018
Net Assets		\$1,818,522	\$1,687,238

The Queen’s Fund complies with all applicable Australian Accounting Standards and Guidelines. These financial statements are audited by Accru Melbourne (Audit) Pty Ltd. Complete financials can be viewed at www.queensfund.org.au

Our Donors

We would like to thank all our supporters throughout 2018/2019 (donations made before 30 April 2019). All the work that The Queen's Fund has achieved could not have been done without the generous support of the following:

TRUSTS AND FOUNDATIONS

All Souls Opportunity Shop
 Andrews Family Charitable Fund Account
 Brougham Family Foundation
 Collier Charitable Fund
 Danks Trust
 Grosvenor Foundation
 H G Turner Samaritan Fund
 Hugh D.T. Williamson Foundation
 Jenkins Foundation
 John Russell MacPherson Fund
 Johnstone Family Foundation
 Link 21 Foundation
 Loughrigg Pty Ltd
 Ocean Grove Uniting Church Opp. Shop "the dove"
 Papermakers of Victoria
 Rotru Investments Pty Ltd
 Sacre Coeur
 South Port Uniting Church
 St Peter's Opportunity Shop
 Stanley Heath Fund
 The Barnes Bequest
 The Estate of Violet Tivey
 The J Permsew Foundation

The Jack Brockhoff Foundation
 The Johnstone Family Foundation
 The Marian & E.H. Flack Trust
 The McPhee Charitable Trust
 The MFCo Staff Foundation
 The Miller Foundation
 The Price Family Foundation
 The R E Ross Trust
 The Victoria Golf Club Women's Committee
 The William Angliss (Victoria) Charitable Fund
 Vermont Lions

WORKPLACE GIVING PROGRAM







Google Australia Pty Ltd
 Morgan Stanley Australia Ltd

MONTHLY DONORS

C Dynon
 C Elston
 N Lukies
 R MacRae
 M Munro
 M Shahabdehkordi
 I Smith
 M Waterworth

Our Supporters

PRO-BONO ADVISERS

Heather Gray & Ben Grant		Andrew Lane & Cressida Staggard	
Rod Bridger & Steph Bennett		Maree Davidson	
Ms Glenda Morrison	P Gerard Nash QC	Natalie Franks	
			

CORPORATE SUPPORTERS

NON-CASH PARTNERSHIPS



TQF@RUN MELBOURNE

Our volunteers participated in the **2018 Run Melbourne event**, held on a chilly winter's day in July. A huge thank you to everyone who supported Team TQF and gave so generously – we raised over **\$5,200**. Well done on an outstanding effort!

Our Supporters

INDIVIDUALS

H & P Alexander	J Coleman	F Hughes	M Minshall	W Tamblyn
K Allen	C & J Collingwood	G Hund	C Morell	E Tang
M Allen	T Collins	R Ing	H Moylan	B Thompson
D Allison	J Colman	C Ingleby	A Murray	C Thompson
A Archibald	J Cook	D Ischia	L Neve	B & K Thomson
P Atkins	M Costello	B Jacob	M Palmer	C Tran
L Banks	P Cox	U John	R Parameswaran	E Tronson
S Barnes	E Cumming	S Jones	J Pau	Z van der Sluys
A Barry	E Damiano	M King	S Peile	C & R Vance
D Barry	E de Bont	A King	J Power	H Walford
N Barwell	G & GD de Bont	S Koukounaras	P Prior	N Walford
K Bayley	K de Bont	J Kuzma	H Prohasky	J Walling
Y Bayley	S de Bont	Q Kynoch	A Quarrell	S Walter
S Benardeau-Short	A Drysdale	J Lai	K Ramsay	M Watson
S Bendy	X Du	A Lal	M Readman	T White
G Blondel	F Field	A Lane	I Renard	A Williams
E Blunden	C Fyffe	J Lord	E Riggall	C Wilson
C Bono	A Gallacher	E MacKinnon	A Robson	I Withell
V Bowen	P Ganeshalingam	M Macqueen	N Rodd	M Wong
G Bramstedt	N Georges	J Marquadt	L Rosenberg	E Woodward
J Briffa	T Gilerman	S Matheson	D Sable	F Yeo
C Britchford	S Givoye	P McBain	M Sallman	L Zhao
J Bunn	S Guglielmi	McCalman	A Sampson	J Zheng
J Burchnall	M Guy	J McInnes	E Sansom	
C Burns	D Hardie	S McInnes	B Schilling	
V Byrne	A Harkness	H McInnes	R Schorer	
E Carew-Reid	J Harley	L McInnes	F Shann	
R Castles	V Harpwood	J McIntyre	J Shirm	
E Castles	P Healey	J & P McLaughlin	J Short	
J & T Castles	M Herring	D & T McLean	A Smith	
S Castles	M Hewitt	M & S McLean	D Stainsby	
A Cavigneaux	G Hirth	R McNabb	C Stapleton	
M Chalmers	J Hookey	R Menda	V Stirling	
A Chlebnikowski	B Hughes	B Michaels	B Stone	

In Conversation with...



WILL JONES
NON-EXECUTIVE DIRECTOR

How did you find out about The Queen's Fund?

I was introduced to The Queen's Fund when I worked at JBWere and provided investment advice to the Trustees. I subsequently arranged for the JBWere Foundation to support the fund. Whilst advising The Queen's Fund on their investment strategy I also supported them with personal donations and introduced some of my clients to the Fund. Following my retirement from JBWere in 2012, I was approached to become a Director of The Queen's Fund Limited when the Fund incorporated.

What does your role involve?

As a non executive Director, I sit on the Board of The Queen's Fund Limited providing oversight; given my background in investment markets, I am helping develop a more sophisticated investment strategy.

How has volunteering affected your personal or professional life?

As I've retired from full time employment I have committed to a number of not for profit roles as well as The Queen's Fund Limited. Being involved in the not for profit sector is both

rewarding and challenging; it is easy to focus on one's own circumstances and forget that there are many people in the community who are not getting enough support from their family, their immediate community or government.

There are lots of charities doing important work. Is there anything different about The Queen's Fund that inspired your support?

The nature of the giving from The Queen's Fund is quite unusual. Generally small amounts are granted to applicants in crisis, but payments are almost always one-offs, meaning recipients can't expect or rely on the Fund to keep providing assistance.

Why do you care about supporting women in financial difficulty? What is your personal connection?

In my professional life I became aware that women tended to be more financially vulnerable than men so I see additional support for women as a small gesture in trying to rebalance this inequality. The ultimate answer to inequality is of course more complex and will require more resources and changes in attitude. Sadly I don't think the need for support from organisations such as The Queen's Fund is going to disappear any time soon.

How You Can Help

MAKE A ONE TIME DONATION

Your donation, no matter how large or small, will provide vulnerable women and children crucial breathing space to get their lives back on track.

Details on how you can donate can be found on our website

www.queensfund.org.au/donate

DONATE THROUGH WORKPLACE GIVING

You can help change lives every payday. Workplace giving is an easy and tax-effective way to support The Queen's Fund. It also provides us with a steady, regular source of funds, enabling us to plan for the future.

LEAVE A BEQUEST

Leaving a bequest to The Queen's Fund is a special way of leaving a lasting legacy with an organisation that has been around for over 130 years. It also allows us to plan for the long-term future.

Please email
secretary@queensfund.org.au
to organise a confidential discussion.

BECOME A RECURRING DONOR

Your monthly donations provide a degree of certainty in our ability to provide assistance to women in need.

When you donate to The Queen's Fund online, simply tick the recurring donation box or set up a scheduled monthly transfer with your bank to:

Account name: The Queen's Fund

BSB: 063 – 019

Account Number: 1012 8344

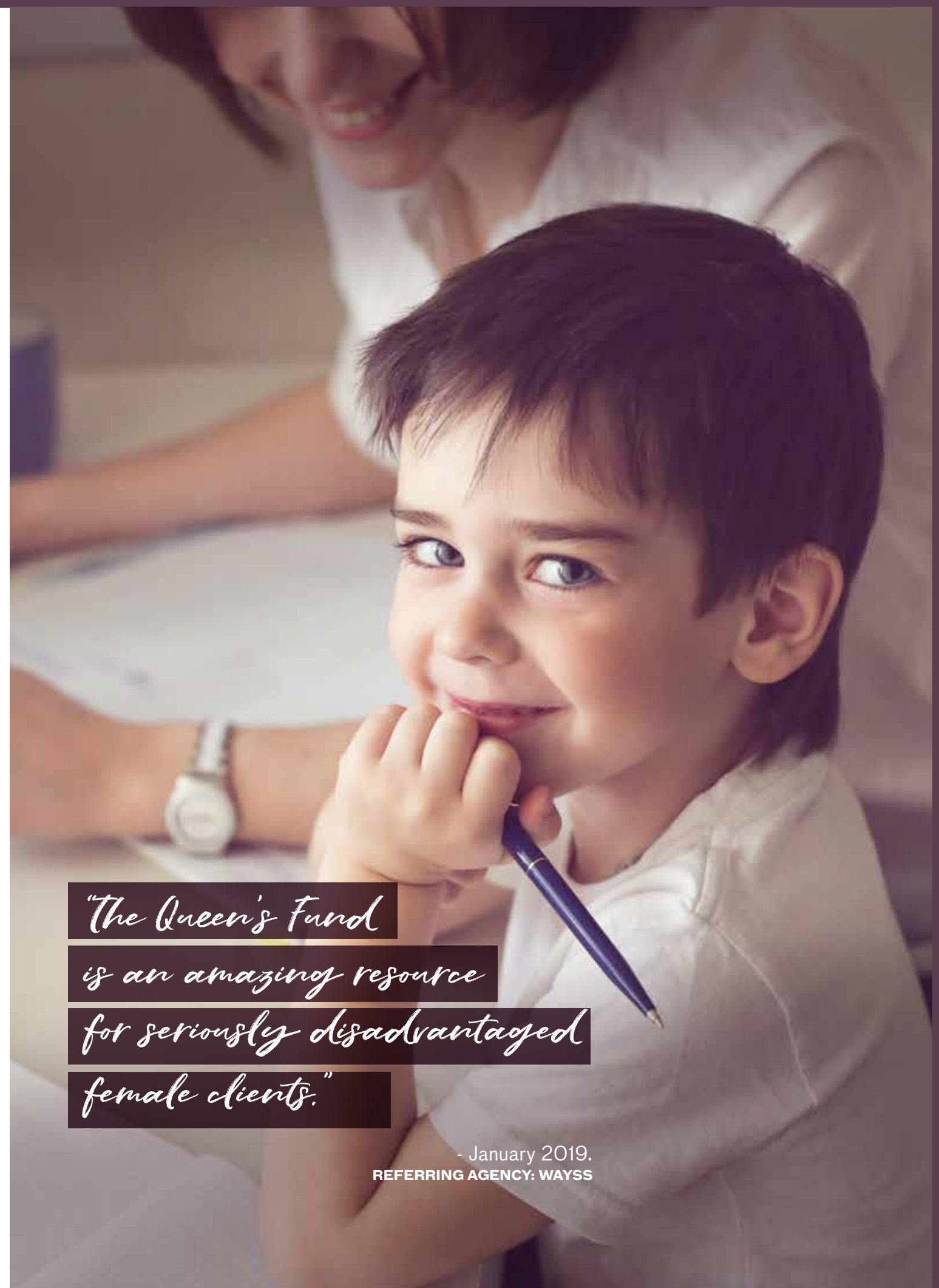
VOLUNTEER

The Queen's Fund has been run entirely by volunteers since 1887. You could help to make a difference to the lives of Victorian women in need by joining one of our subcommittees. We are looking for passionate enthusiastic volunteers with interests, skills or expertise in PR/marketing, governance, law, and community or welfare services.

Please email
secretary@queensfund.org.au
with details of your skills, experience and availability.

The Queen's Fund is a Public Benevolent Institution (PBI) and is endorsed by the Australian Taxation Office as a Deductible Gift Recipient (DGR) with charity tax concessions. Our ABN is 33 355 436 160.

This report has been printed on 100% post-consumer recycled paper.



*"The Queen's Fund
is an amazing resource
for seriously disadvantaged
female clients."*

- January 2019.
REFERRING AGENCY: WAYSS

Visit

queensfund.org.au